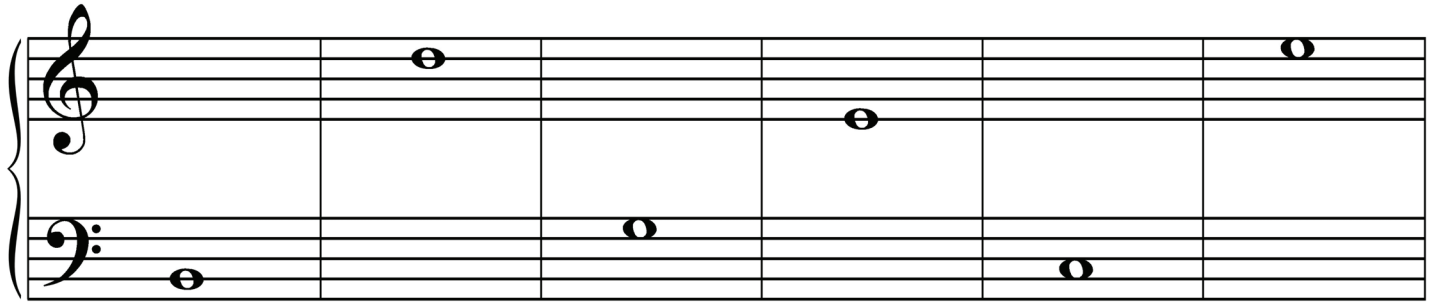


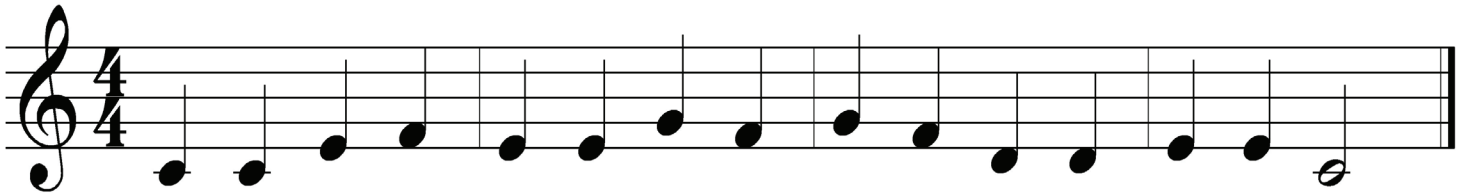
Grade One Worksheet 1

1. Draw an **X** through the incorrect letters. Check your clefs.



B D C A F E

2. Circle the notes that repeat.



3. Circle the intervals of a 2nd (step).



4. Draw the following notes.

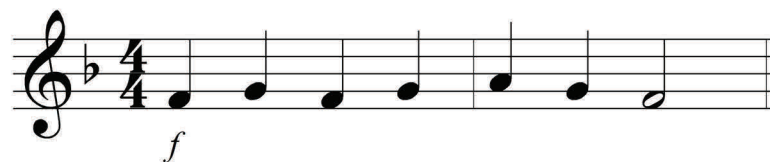
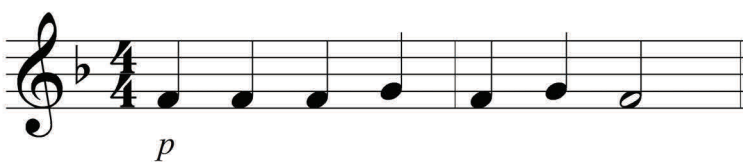
 Quarter note

 whole note

 half rest

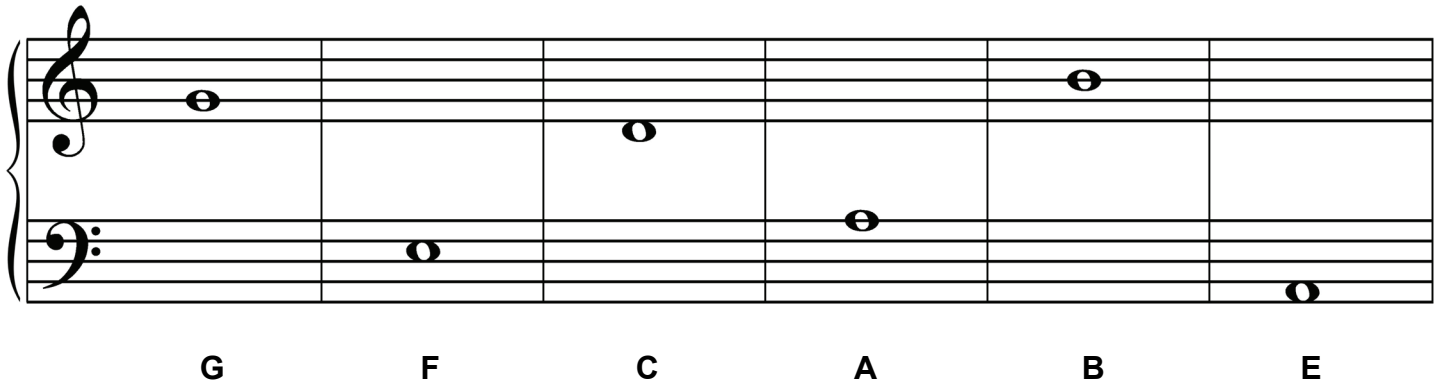
 dotted half note

5. Circle the music example that should be played softly.



Grade One Worksheet 2

1. Draw an **X** through the incorrect letters. Check your clefs.



A musical staff with a grand staff (treble and bass clefs) divided into six measures. The notes are: G4 (treble), F3 (bass), C4 (treble), A3 (bass), B4 (treble), and E3 (bass). Below the staff, the letters G, F, C, A, B, and E are printed in bold, corresponding to the notes above.

2. Circle the intervals of a 3rd (skip).

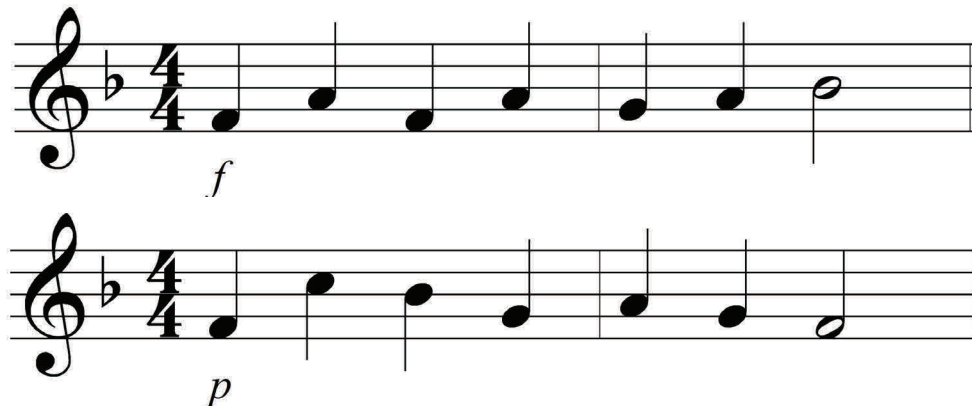


A musical staff in 4/4 time with a treble clef. The notes are: G4, A4, B4, C5, B4, A4, G4, F4, E4, D4, C4, B3, A3, G3, F3, E3, D3, C3. The interval between G4 and C5 is a 3rd (skip).

3. Draw the following notes.

_____ _____ _____ _____
dotted half note Half rest Quarter note whole rest

4. Circle the music example that should be played loudly.



Two musical examples in 4/4 time with a treble clef and a key signature of one flat (Bb). The first example is marked with a forte (*f*) dynamic and the second with a piano (*p*) dynamic. Both examples consist of a sequence of notes: G4, A4, B4, C5, B4, A4, G4, F4, E4, D4, C4, B3, A3, G3, F3, E3, D3, C3.